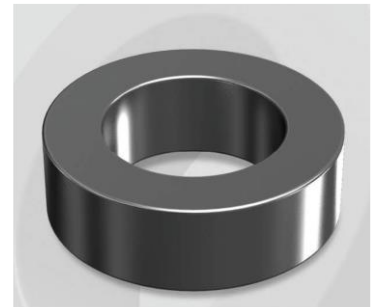


# CH234060GT

OD : 234

## Electrical Characteristics

Material	Permeability ( $\mu$ )	AL $\pm$ 8% (nH/N <sup>2</sup> )	DCB (% min) @ 100 Oe	Coreloss (mW/cm <sup>2</sup> , max) @50kHz, 1000G
High Flux GT	60	51	77.4	180



## Core Dimensions

Dimensions		Uncoated		Coated		Color	Packaging
		(mm)	(inch)	(mm)	(inch)		
OD	(Max)	23.57	0.928	24.30	0.957	Black	Box Qty = 750 pcs
ID	(min)	14.40	0.567	13.77	0.542		
HT	(max)	8.89	0.350	9.70	0.382		

## Physical Characteristics

Cross Section (A)	Path Length ( $l$ )	Window Area (Wa)	Volume (V)	Breakdown Voltage (Vac)
0.388 cm <sup>2</sup>	5.88 cm	1.49 cm <sup>2</sup>	2.28 cm <sup>3</sup>	1,000
0.060 in <sup>2</sup>	2.31 in	294,060 cmil	0.139 in <sup>3</sup>	

## Winding Information

0% Winding length/turn (cm)		
2.993		
40% winding factor Surface Area (cm <sup>2</sup> )		
26.78		
40% Wound Di.(mm)		
OD	ID	HT
27.76	9.02	13.81

## Typical DC Bias Performance

