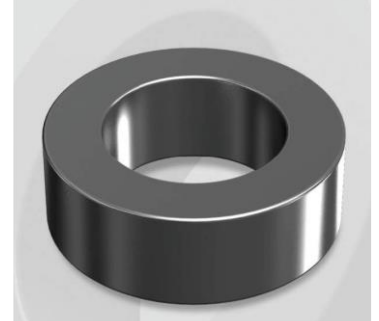


CH270060GT14

Electrical Characteristics

Material	Permeability (μ)	AL \pm 8% (nH/N ²)	DCB (% min) @ 100 Oe	Coreloss (mW/cm ² , max) @ 50kHz, 1000G
High Flux GT	60	94	77.4	180

OD : 270



Core Dimensions

Dimensions		Uncoated		Coated		Color	Packaging
		(mm)	(inch)	(mm)	(inch)		
OD	(Max)	26.92	1.060	27.70	1.091	Black	Box Qty = 324 pcs
ID	(min)	14.73	0.580	14.10	0.555		
HT	(max)	14.00	0.551	15.00	0.591		

Physical Characteristics

Cross Section (A)	Path Length (ℓ)	Window Area (Wa)	Volume (V)	Breakdown Voltage (Vac)
0.819 cm ²	6.35 cm	1.56 cm ²	5.200 cm ³	1,000
0.127 in ²	2.500 in	307,874 cmil	0.3173 in ³	

Winding Information

0% Winding length/turn (cm)		
4.36		
40% winding factor Surface Area (cm ²)		
38.24		
40% Wound Di.(mm)		
OD	ID	HT
31.16	9.23	19.17

Typical DC Bias Performance

