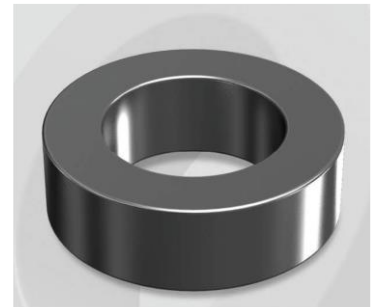


CK172060GT

OD : 172

Electrical Characteristics

Material	Permeability (μ)	AL \pm 8% (nH/N ²)	DCB (% min) @ 100 Oe	Coreloss (mW/cm ³ , max) @50kHz, 1000G
Mega Flux GT	60	43	72.8	550



Core Dimensions

Dimensions		Uncoated		Coated		Color	Packaging
		(mm)	(inch)	(mm)	(inch)		
OD	(Max)	17.27	0.680	18.03	0.710	Black	Box Qty = 1,960 pcs
ID	(min)	9.65	0.380	9.02	0.355		
HT	(max)	6.35	0.250	7.11	0.280		

Physical Characteristics

Cross Section (A)	Path Length (l)	Window Area (W _a)	Volume (V)	Breakdown Voltage (Vac)
0.232 cm ²	4.14 cm	0.638 cm ²	0.9605 cm ³	1,000
0.03596 in ²	1.630 in	125,913 cmil	0.0586 in ³	

Winding Information

0% Winding length/turn (cm)		
2.323		
40% winding factor Surface Area (cm ²)		
13.91		
40% Wound Di.(mm)		
OD	ID	HT
20.24	5.90	9.77

Typical DC Bias Performance

