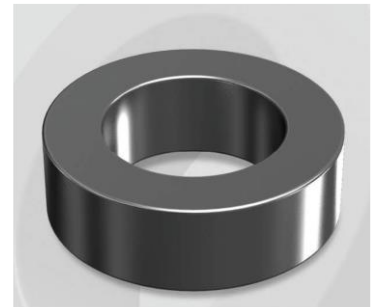


CK270060GT14

Electrical Characteristics

Material	Permeability (μ)	AL \pm 8% (nH/N ²)	DCB (% min) @ 100 Oe	Coreloss (mW/cm ² , max) @ 50kHz, 1000G
Mega Flux GT	60	94	72.8	550

OD : 270



Core Dimensions

Dimensions		Uncoated		Coated		Color	Packaging
		(mm)	(inch)	(mm)	(inch)		
OD	(Max)	26.92	1.060	27.70	1.091	Black	Box Qty = 360 pcs
ID	(min)	14.73	0.580	14.10	0.555		
HT	(max)	14.00	0.551	15.00	0.591		

Physical Characteristics

Cross Section (A)	Path Length (l)	Window Area (Wa)	Volume (V)	Breakdown Voltage (Vac)
0.819 cm ²	6.35 cm	1.56 cm ²	5.201 cm ³	1,000
0.1269 in ²	2.50 in	307,874 cmil	0.3173 in ³	

Winding Information

0% Winding length/turn (cm)		
4.360		
40% winding factor Surface Area (cm ²)		
38.24		
40% Wound Di.(mm)		
OD	ID	HT
31.16	9.23	19.17

Typical DC Bias Performance

