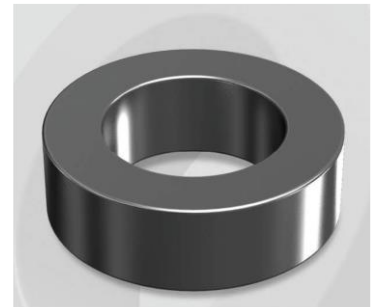


# CK300060GT

OD : 300

## Electrical Characteristics

Material	Permeability ( $\mu$ )	AL $\pm$ 8% (nH/N <sup>2</sup> )	DCB (% min) @ 100 Oe	Coreloss (mW/cm <sup>2</sup> , max) @50kHz, 1000G
Mega Flux GT	60	68	72.8	550



## Core Dimensions

Dimensions		Uncoated		Coated		Color	Packaging
		(mm)	(inch)	(mm)	(inch)		
OD	(Max)	30.00	1.181	30.80	1.213	Black	Box Qty = 240 pcs
ID	(min)	17.40	0.685	16.70	0.657		
HT	(max)	10.90	0.429	11.80	0.465		

## Physical Characteristics

Cross Section (A)	Path Length ( $l$ )	Window Area (W <sub>a</sub> )	Volume (V)	Breakdown Voltage (Vac)
0.652 cm <sup>2</sup>	7.27 cm	2.19 cm <sup>2</sup>	4.74 cm <sup>3</sup>	1,000
0.101 in <sup>2</sup>	2.86 in	432,208 cmil	0.289 in <sup>3</sup>	

## Winding Information

0% Winding length/turn (cm)		
3.770		
40% winding factor Surface Area (cm <sup>2</sup> )		
41.47		
40% Wound Di.(mm)		
OD	ID	HT
34.95	10.93	16.76

## Typical DC Bias Performance

