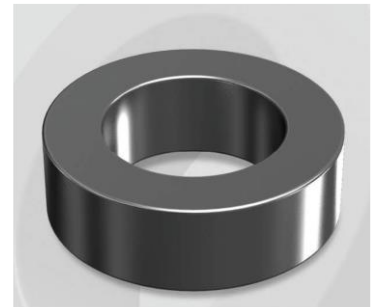


CK540060GT

OD : 540

Electrical Characteristics

Material	Permeability (μ)	AL \pm 8% (nH/N ²)	DCB (% min) @ 100 Oe	Coreloss (mW/cm ² , max) @ 50kHz, 500G
Mega Flux GT	60	102	72.8	130



Core Dimensions

Dimensions		Uncoated		Coated		Color	Packaging
		(mm)	(inch)	(mm)	(inch)		
OD	(Max)	54.00	2.126	54.90	2.161	Black	Box Qty = 77 pcs
ID	(min)	29.00	1.142	28.10	1.106		
HT	(max)	14.40	0.567	15.30	0.602		

Physical Characteristics

Cross Section (A)	Path Length (l)	Window Area (Wa)	Volume (V)	Breakdown Voltage (Vac)
1.710 cm ²	12.63 cm	6.20 cm ²	21.597 cm ³	1,000
0.265 in ²	4.97 in	1,223,604 cmil	1.3179 in ³	

Winding Information

0% Winding length/turn (cm)		
5.740		
40% winding factor Surface Area (cm ²)		
114.18		
40% Wound Di.(mm)		
OD	ID	HT
61.81	18.39	23.61

Typical DC Bias Performance

