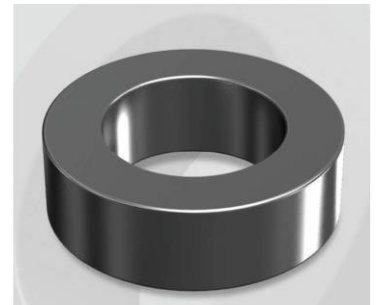


CM097147G

Electrical Characteristics

Material	Permeability (μ)	AL \pm 8% (nH/N ²)	DCB (% min) @ 20 Oe	Coreloss (mW/cm ³ , max) @50kHz, 1000G
MPP	147	78	77.28	290

OD : 097



Core Dimensions

Dimensions		Uncoated		Coated		Color	Packaging
		(mm)	(inch)	(mm)	(inch)		
OD	(Max)	9.65	0.380	10.29	0.405	Black	Box Qty = 8,000 pcs
ID	(min)	4.78	0.188	4.27	0.168		
HT	(max)	3.96	0.156	4.57	0.180		

Physical Characteristics

Cross Section (A)	Path Length (l)	Window Area (Wa)	Volume (V)	Breakdown Voltage (Vac)
0.0945 cm ²	2.18 cm	0.1429 cm ²	0.2060 cm ³	1,000
0.01465 in ²	0.858 in	28,202 cmil	0.01257 in ³	

Winding Information

0% Winding length/turn (cm)		
1.516		
40% winding factor Surface Area (cm ²)		
4.47		
40% Wound Di.(mm)		
OD	ID	HT
11.32	2.79	5.83

Typical DC Bias Performance

