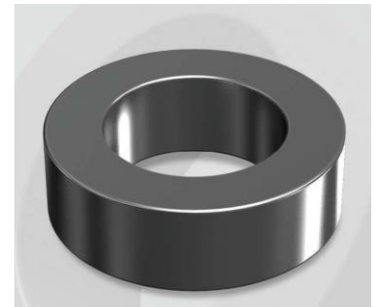


CM1325060G

OD : 1325

Electrical Characteristics

Material	Permeability (μ)	AL \pm 8% (nH/N ²)	DCB (% min) @ 50 Oe	Coreloss (mW/cm ³ , max) @50kHz, 100G
MPP	60	156	73.60	1.8



Core Dimensions

Dimensions		Uncoated		Coated		Color	Packaging
		(mm)	(inch)	(mm)	(inch)		
OD	(Max)	132.5	5.217	134.2	5.283	Black	Box Qty = 4 pcs
ID	(min)	78.6	3.094	77.0	3.031		
HT	(max)	25.4	1.000	26.8	1.055		

Physical Characteristics

Cross Section (A)	Path Length (l)	Window Area (W _a)	Volume (V)	Breakdown Voltage (Vac)
6.71 cm ²	32.42 cm	46.57 cm ²	217.54 cm ³	1,000
1.040 in ²	12.76 in	9,190,102 cmil	13.274 in ³	

Winding Information

0% Winding length/turn (cm)		
11.080		
40% winding factor Surface Area (cm ²)		
649.77		
40% Wound Di.(mm)		
OD	ID	HT
153.59	50.41	49.79

Typical DC Bias Performance

