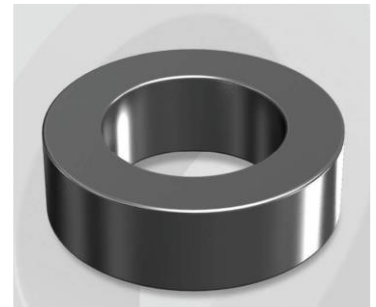


# CM468147G

OD : 468

## Electrical Characteristics

Material	Permeability ( $\mu$ )	AL $\pm$ 8% (nH/N <sup>2</sup> )	DCB (% min) @ 20 Oe	Coreloss (mW/cm <sup>3</sup> , max) @ 50kHz, 500G
MPP	147	210	77.28	90



## Core Dimensions

Dimensions		Uncoated		Coated		Color	Packaging
		(mm)	(inch)	(mm)	(inch)		
OD	(Max)	46.74	1.840	47.60	1.874	Black	Box Qty = 72 pcs
ID	(min)	28.70	1.130	27.90	1.098		
HT	(max)	15.24	0.600	16.13	0.635		

## Physical Characteristics

Cross Section (A)	Path Length ( $l$ )	Window Area (Wa)	Volume (V)	Breakdown Voltage (Vac)
1.340 cm <sup>2</sup>	11.63 cm	6.11 cm <sup>2</sup>	15.584 cm <sup>3</sup>	1,000
0.208 in <sup>2</sup>	4.58 in	1,205,842 cmil	0.951 in <sup>3</sup>	

## Winding Information

0% Winding length/turn (cm)		
5.196		
40% winding factor Surface Area (cm <sup>2</sup> )		
97.79		
40% Wound Di.(mm)		
OD	ID	HT
54.66	18.26	24.48

## Typical DC Bias Performance

