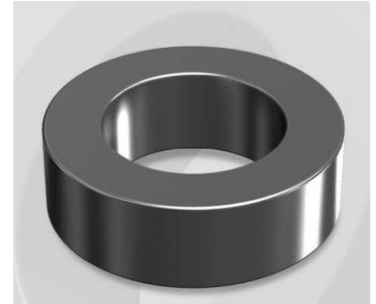


CM610026G

Electrical Characteristics

Material	Permeability (μ)	AL \pm 8% (nH/N ²)	DCB (% min) @ 200 Oe	Coreloss (mW/cm ³ , max) @ 50kHz, 100G
MPP	26	83	49.68	1.8

OD : 610



Core Dimensions

Dimensions		Uncoated		Coated		Color	Packaging
		(mm)	(inch)	(mm)	(inch)		
OD	(Max)	62.00	2.441	63.10	2.484	Black	Box Qty = 24 pcs
ID	(min)	32.60	1.283	31.37	1.235		
HT	(max)	25.00	0.984	26.27	1.034		

Physical Characteristics

Cross Section (A)	Path Length (l)	Window Area (Wa)	Volume (V)	Breakdown Voltage (Vac)
3.6750 cm ²	14.37 cm	7.730 cm ²	52.8098 cm ³	1,000
0.5696 in ²	5.657 in	1,525,558 cmil	3.2225 in ³	

Winding Information

0% Winding length/turn (cm)		
8.427		
40% winding factor Surface Area (cm ²)		
173.99		
40% Wound Di.(mm)		
OD	ID	HT
70.78	20.54	35.53

Typical DC Bias Performance

