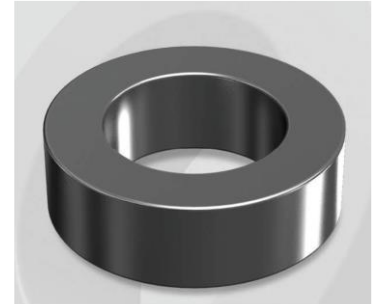


CH270160G18

Electrical Characteristics

Material	Permeability (μ)	AL \pm 8% (nH/N ²)	DCB (% min) @ 20 Oe	Coreloss (mW/cm ² , max) @50kHz, 1000G
High Flux	160	323	81.0	360

OD : 270



Core Dimensions

Dimensions		Uncoated		Coated		Color	Packaging
		(mm)	(inch)	(mm)	(inch)		
OD	(Max)	26.92	1.060	27.70	1.091	Black	Box Qty = 252 pcs
ID	(min)	14.73	0.580	14.10	0.555		
HT	(max)	18.00	0.709	19.00	0.748		

Physical Characteristics

Cross Section (A)	Path Length (l)	Window Area (Wa)	Volume (V)	Breakdown Voltage (Vac)
1.052 cm ²	6.35 cm	1.56 cm ²	6.680 cm ³	1,000
0.1631 in ²	2.50 in	307,874 cmil	0.4076 in ³	

Winding Information

0% Winding length/turn (cm)		
5.160		
40% winding factor Surface Area (cm ²)		
43.31		
40% Wound Di.(mm)		
OD	ID	HT
31.16	9.23	23.17

Typical DC Bias Performance

