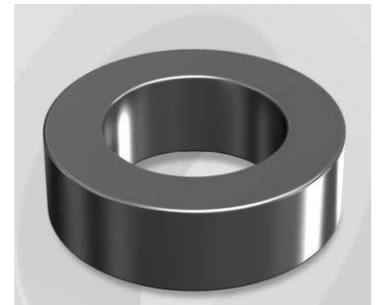


# CH571147G

OD : 571

## Electrical Characteristics

Material	Permeability ( $\mu$ )	AL $\pm$ 8% (nH/N <sup>2</sup> )	DCB (% min) @ 20 Oe	Coreloss (mW/cm <sup>2</sup> , max) @ 50kHz, 500G
High Flux	147	306	82.80	110



## Core Dimensions

Dimensions		Uncoated		Coated		Color	Packaging
		(mm)	(inch)	(mm)	(inch)		
OD	(Max)	57.15	2.250	58.00	2.283	Black	Box Qty = 77 pcs
ID	(min)	26.39	1.039	25.60	1.008		
HT	(max)	15.24	0.600	16.10	0.634		

## Physical Characteristics

Cross Section (A)	Path Length ( $l$ )	Window Area (W <sub>a</sub> )	Volume (V)	Breakdown Voltage (Vac)
2.290 cm <sup>2</sup>	12.50 cm	5.14 cm <sup>2</sup>	28.6250 cm <sup>3</sup>	1,000
0.35495 in <sup>2</sup>	4.921 in	1,014,407 cmil	1.7467 in <sup>3</sup>	

## Winding Information

0% Winding length/turn (cm)		
6.460		
40% winding factor Surface Area (cm <sup>2</sup> )		
120.40		
40% Wound Di.(mm)		
OD	ID	HT
64.20	16.75	23.62

## Typical DC Bias Performance

