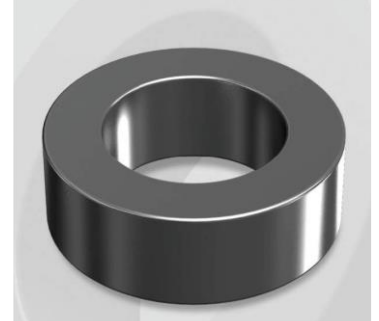


# CH740060G

## Electrical Characteristics

Material	Permeability (μ)	AL ± 8% (nH/N <sup>2</sup> )	DCB (% min) @ 50 Oe	Coreloss (mW/cm <sup>2</sup> , max) @ 50kHz, 300G
High Flux	60	206	82.8	23

OD : 740



## Core Dimensions

Dimensions		Uncoated		Coated		Color	Packaging
		(mm)	(inch)	(mm)	(inch)		
OD	(Max)	74.10	2.917	75.20	2.961	Black	Box Qty = 15 pcs
ID	(min)	45.30	1.783	44.07	1.735		
HT	(max)	35.00	1.378	36.27	1.428		

## Physical Characteristics

Cross Section (A)	Path Length (ℓ)	Window Area (Wa)	Volume (V)	Breakdown Voltage (Vac)
5.04 cm <sup>2</sup>	18.38 cm	15.25 cm <sup>2</sup>	92.640 cm <sup>3</sup>	1,000
0.781 in <sup>2</sup>	7.24 in	3,009,310 cmil	5.653 in <sup>3</sup>	

## Winding Information

AWG Wire No. Dia. (cm)	Single Layer Turn Rdc. (Ω)	AWG Wire No. Dia. (cm)	Single Layer Turn Rdc. (Ω)	Winding length/turn (cm)		
10 0.267	N-A	19 0.0980	N-A	10.367		
11 0.238		20 0.0879		40% winding factor Surface Area (cm <sup>2</sup> )		
12 0.213		21 0.0785		283.09		
13 0.190		22 0.0701		40% Wound Di.(mm)		
14 0.171		23 0.0632		OD	ID	HT
15 0.153		24 0.0566		86.36	28.85	49.46
16 0.137		25 0.0505				
17 0.122		26 0.0452				
18 0.109		27 0.0409				

## Typical DC Bias Performance

