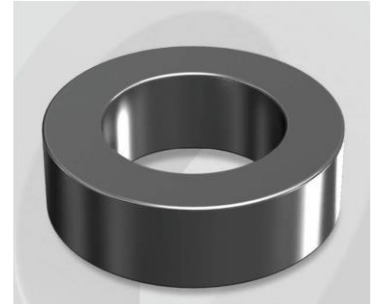


CS096090G

Electrical Characteristics

Material	Permeability (μ)	AL \pm 12% (nH/N ²)	DCB (% min) @ 30 Oe	Coreloss (mW/cm ² , max) @ 50kHz, 1000G
SENDUST	90	38	64.4	320

OD : 096



Core Dimensions

Dimensions		Uncoated		Coated		Color	Packaging
		(mm)	(inch)	(mm)	(inch)		
OD	(Max)	9.65	0.380	10.29	0.405	Black	Box Qty = 8,000 pcs
ID	(Min)	4.78	0.188	4.27	0.168		
HT	(Max)	3.18	0.125	3.81	0.150		

Physical Characteristics

Cross Section (A)	Path Length (l)	Window Area (Wa)	Volume (V)	Breakdown Voltage (Vac)
0.0752 cm ²	2.18 cm	0.1429 cm ²	0.1639 cm ³	1,000
0.01166 in ²	0.858 in	28,202 cmil	0.0100 in ³	

Winding Information

0% Winding length/turn (cm)		
1.364		
40% winding factor Surface Area (cm ²)		
4.14		
40% Wound Di.(mm)		
OD	ID	HT
11.32	2.79	5.07

Typical DC Bias Performance

