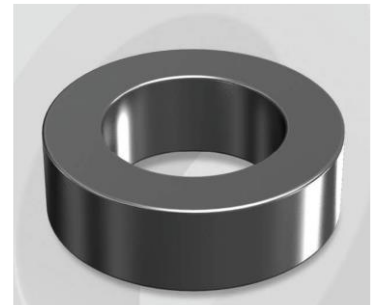


CS1013026G

OD : 1013

Electrical Characteristics

Material	Permeability (μ)	AL \pm 8% (nH/N ²)	DCB (% min) @ 50 Oe	Coreloss (mW/cm ³ , max) @50kHz, 100G
SENDUST	26	40	81.0	2.4



Core Dimensions

Dimensions		Uncoated		Coated		Color	Packaging
		(mm)	(inch)	(mm)	(inch)		
OD	(Max)	101.60	4.000	103.10	4.059	Black	Box Qty = 12 pcs
ID	(Min)	57.20	2.252	55.70	2.193		
HT	(Max)	13.60	0.535	14.90	0.587		

Physical Characteristics

Cross Section (A)	Path Length (l)	Window Area (W _a)	Volume (V)	Breakdown Voltage (Vac)
2.972 cm ²	24.3 cm	24.37 cm ²	72.13 cm ³	1,000
0.461 in ²	9.56 in	4,808,939 cmil	4.401 in ³	

Winding Information

0% Winding length/turn (cm)		
7.720		
40% winding factor Surface Area (cm ²)		
345.39		
40% Wound Di.(mm)		
OD	ID	HT
116.93	36.46	31.44

Typical DC Bias Performance

