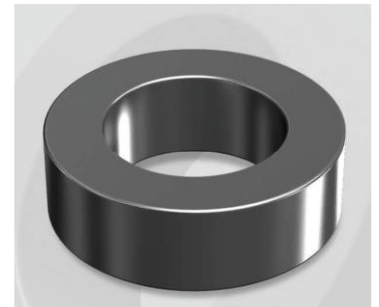


# CS1016090G

OD : 1016

## Electrical Characteristics

Material	Permeability ( $\mu$ )	AL $\pm$ 8% (nH/N <sup>2</sup> )	DCB (% min) @ 30 Oe	Coreloss (mW/cm <sup>3</sup> , max) @ 50kHz, 100G
SENDUST	90	164	64.4	2.4



## Core Dimensions

Dimensions		Uncoated		Coated		Color	Packaging
		(mm)	(inch)	(mm)	(inch)		
OD	(Max)	101.60	4.000	103.10	4.059	Black	Box Qty = 12 pcs
ID	(Min)	57.20	2.252	55.70	2.193		
HT	(Max)	16.50	0.650	17.80	0.701		

## Physical Characteristics

Cross Section (A)	Path Length ( $l$ )	Window Area (Wa)	Volume (V)	Breakdown Voltage (Vac)
3.522 cm <sup>2</sup>	24.3 cm	24.37 cm <sup>2</sup>	85.48 cm <sup>3</sup>	1,000
0.546 in <sup>2</sup>	9.56 in	4,808,939 cmil	5.216 in <sup>3</sup>	

## Winding Information

0% Winding length/turn (cm)		
8.300		
40% winding factor Surface Area (cm <sup>2</sup> )		
359.37		
40% Wound Di.(mm)		
OD	ID	HT
116.93	36.46	34.34

## Typical DC Bias Performance

