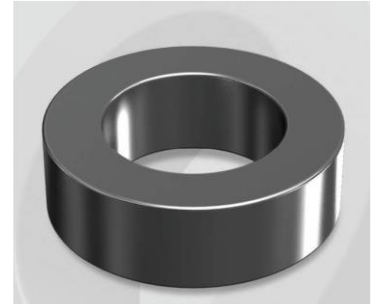


CS102075G

Electrical Characteristics

Material	Permeability (μ)	AL \pm 12% (nH/N ²)	DCB (% min) @ 40 Oe	Coreloss (mW/cm ² , max) @50kHz, 1000G
SENDUST	75	40	64.4	320

OD : 102



Core Dimensions

Dimensions		Uncoated		Coated		Color	Packaging
		(mm)	(inch)	(mm)	(inch)		
OD	(Max)	10.16	0.400	10.80	0.425	Black	Box Qty = 8,000 pcs
ID	(Min)	5.08	0.200	4.57	0.180		
HT	(Max)	3.96	0.156	4.57	0.180		

Physical Characteristics

Cross Section (A)	Path Length (l)	Window Area (W _a)	Volume (V)	Breakdown Voltage (Vac)
0.1000 cm ²	2.38 cm	0.1640 cm ²	0.2380 cm ³	1,000
0.01550 in ²	0.937 in	32,366 cmil	0.0145 in ³	

Winding Information

0% Winding length/turn (cm)		
1.537		
40% winding factor Surface Area (cm ²)		
4.85		
40% Wound Di.(mm)		
OD	ID	HT
11.91	2.99	5.91

Typical DC Bias Performance

