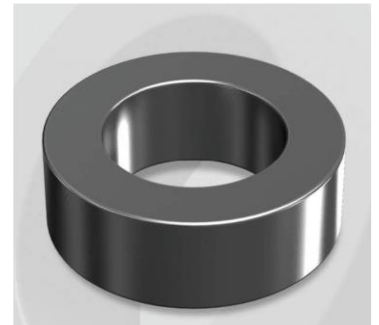


# CS203060G9.2

## Electrical Characteristics

Material	Permeability (μ)	AL ± 8% (nH/N <sup>2</sup> )	DCB (% min) @ 50 Oe	Coreloss (mW/cm <sup>2</sup> , max) @ 50kHz, 1000G
SENDUST	60	46	64.4	320

OD : 203



## Core Dimensions

Dimensions		Uncoated		Coated		Color	Packaging
		(mm)	(inch)	(mm)	(inch)		
OD	(Max)	20.32	0.800	21.10	0.831	Black	Box Qty = 1080 pcs
ID	(min)	12.70	0.500	12.07	0.475		
HT	(max)	9.20	0.362	10.00	0.394		

## Physical Characteristics

Cross Section (A)	Path Length (ℓ)	Window Area (Wa)	Volume (V)	Breakdown Voltage (Vac)
0.327 cm <sup>2</sup>	5.09 cm	1.14 cm <sup>2</sup>	1.664 cm <sup>3</sup>	1,000
0.051 in <sup>2</sup>	2.004 in	224,985 cmil	0.1015 in <sup>3</sup>	

## Winding Information

0% Winding length/turn (cm)		
2.903		
40% winding factor Surface Area (cm <sup>2</sup> )		
21.86		
40% Wound Di.(mm)		
OD	ID	HT
24.13	7.89	13.61

## Typical DC Bias Performance

