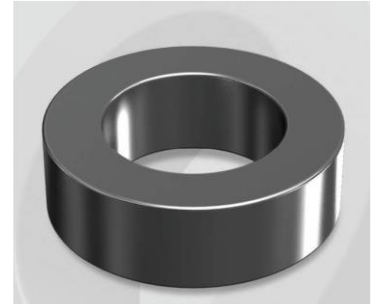


CS229060G

Electrical Characteristics

Material	Permeability (μ)	AL \pm 8% (nH/N ²)	DCB (% min) @ 50 Oe	Coreloss (mW/cm ² , max) @50kHz, 1000G
SENDUST	60	43	64.4	320

OD : 229



Core Dimensions

Dimensions		Uncoated		Coated		Color	Packaging
		(mm)	(inch)	(mm)	(inch)		
OD	(Max)	22.86	0.900	23.62	0.930	Black	Box Qty = 850 pcs
ID	(min)	13.97	0.550	13.39	0.527		
HT	(max)	7.62	0.300	8.38	0.330		

Physical Characteristics

Cross Section (A)	Path Length (l)	Window Area (Wa)	Volume (V)	Breakdown Voltage (Vac)
0.331 cm ²	5.67 cm	1.41 cm ²	1.877 cm ³	1,000
0.0513 in ²	2.23 in	278,271 cmil	0.1145 in ³	

Winding Information

0% Winding length/turn (cm)		
2.699		
40% winding factor Surface Area (cm ²)		
24.13		
40% Wound Di.(mm)		
OD	ID	HT
26.99	8.77	12.37

Typical DC Bias Performance

