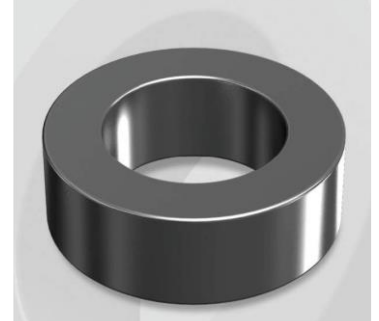


CS330026G

Electrical Characteristics

Material	Permeability (μ)	AL \pm 8% (nH/N ²)	DCB (% min) @ 200 Oe	Coreloss (mW/cm ² , max) @ 50kHz, 1000G
SENDUST	26	28	46.0	320

OD : 330



Core Dimensions

Dimensions		Uncoated		Coated		Color	Packaging
		(mm)	(inch)	(mm)	(inch)		
OD	(Max)	33.02	1.300	33.83	1.332	Black	Box Qty = 240 pcs
ID	(min)	19.94	0.785	19.30	0.760		
HT	(max)	10.67	0.420	11.61	0.457		

Physical Characteristics

Cross Section (A)	Path Length (l)	Window Area (Wa)	Volume (V)	Breakdown Voltage (Vac)
0.672 cm ²	8.15 cm	2.93 cm ²	5.476 cm ³	1,000
0.104 in ²	3.209 in	577,600 cmil	0.3341 in ³	

Winding Information

0% Winding length/turn (cm)		
3.775		
40% winding factor Surface Area (cm ²)		
49.01		
40% Wound Di.(mm)		
OD	ID	HT
38.69	12.64	17.37

Typical DC Bias Performance

