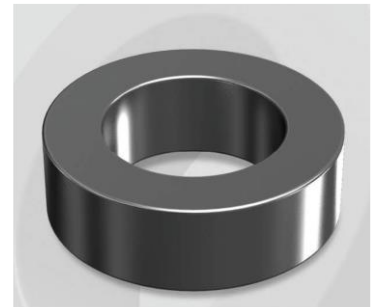


CS343075G

OD : 343

Electrical Characteristics

Material	Permeability (μ)	AL \pm 8% (nH/N ²)	DCB (% min) @ 40 Oe	Coreloss (mW/cm ² , max) @ 50kHz, 1000G
SENDUST	75	47	64.4	320



Core Dimensions

Dimensions		Uncoated		Coated		Color	Packaging
		(mm)	(inch)	(mm)	(inch)		
OD	(Max)	34.29	1.350	35.20	1.386	Black	Box Qty = 280 pcs
ID	(Min)	23.37	0.920	22.60	0.890		
HT	(Max)	8.89	0.350	9.83	0.387		

Physical Characteristics

Cross Section (A)	Path Length (l)	Window Area (Wa)	Volume (V)	Breakdown Voltage (Vac)
0.454 cm ²	8.95 cm	4.01 cm ²	4.0633 cm ³	1,000
0.07037 in ²	3.524 in	791,395 cmil	0.2479 in ³	

Winding Information

0% Winding length/turn (cm)		
3.226		
40% winding factor Surface Area (cm ²)		
52.34		
40% Wound Di.(mm)		
OD	ID	HT
41.08	14.79	16.67

Typical DC Bias Performance

