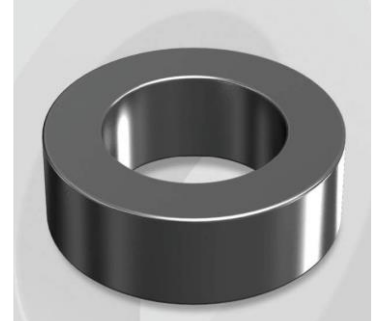


CS358060G15

Electrical Characteristics

Material	Permeability (μ)	AL \pm 8% (nH/N ²)	DCB (% min) @ 50 Oe	Coreloss (mW/cm ² , max) @ 50kHz, 1000G
SENDUST	60	80	64.4	320

OD : 358



Core Dimensions

Dimensions		Uncoated		Coated		Color	Packaging
		(mm)	(inch)	(mm)	(inch)		
OD	(Max)	35.81	1.410	36.70	1.445	Black	Box Qty = 180 pcs
ID	(min)	22.35	0.880	21.50	0.846		
HT	(max)	15.00	0.591	16.00	0.630		

Physical Characteristics

Cross Section (A)	Path Length (ℓ)	Window Area (Wa)	Volume (V)	Breakdown Voltage (Vac)
0.972 cm ²	8.98 cm	3.64 cm ²	8.728 cm ³	1,000
0.151 in ²	3.535 in	718,374 cmil	0.5326 in ³	

Winding Information

0% Winding length/turn (cm)		
4.72		
40% winding factor Surface Area (cm ²)		
64.43		
40% Wound Di.(mm)		
OD	ID	HT
42.15	14.09	22.43

Typical DC Bias Performance

