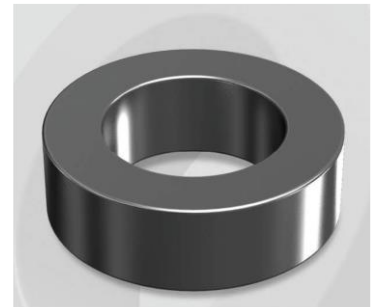


# CS467026G

OD : 467

### Electrical Characteristics

Material	Permeability ( $\mu$ )	AL $\pm$ 8% (nH/N <sup>2</sup> )	DCB (% min) @ 200 Oe	Coreloss (mW/cm <sup>2</sup> , max) @ 50kHz, 300G
SENDUST	26	59	46.0	27



### Core Dimensions

Dimensions		Uncoated		Coated		Color	Packaging
		(mm)	(inch)	(mm)	(inch)		
OD	(Max)	46.74	1.840	47.60	1.874	Black	Box Qty = 72 pcs
ID	(Min)	24.13	0.950	23.30	0.917		
HT	(Max)	18.03	0.710	18.92	0.745		

### Physical Characteristics

Cross Section (A)	Path Length ( $l$ )	Window Area (Wa)	Volume (V)	Breakdown Voltage (Vac)
1.990 cm <sup>2</sup>	10.74 cm	4.27 cm <sup>2</sup>	21.373 cm <sup>3</sup>	1,000
0.308 in <sup>2</sup>	4.23 in	842,708 cmil	1.304 in <sup>3</sup>	

### Winding Information

0% Winding length/turn (cm)		
6.214		
40% winding factor Surface Area (cm <sup>2</sup> )		
96.50		
40% Wound Di.(mm)		
OD	ID	HT
53.30	15.26	25.79

### Typical DC Bias Performance

