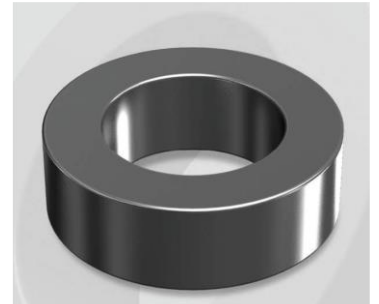


CS467090G

OD : 467

Electrical Characteristics

Material	Permeability (μ)	AL \pm 8% (nH/N ²)	DCB (% min) @ 30 Oe	Coreloss (mW/cm ³ , max) @ 50kHz, 500G
SENDUST	90	202	64.4	73



Core Dimensions

Dimensions		Uncoated		Coated		Color	Packaging
		(mm)	(inch)	(mm)	(inch)		
OD	(Max)	46.74	1.840	47.60	1.874	Black	Box Qty = 72 pcs
ID	(min)	24.13	0.950	23.30	0.917		
HT	(max)	18.03	0.710	18.92	0.745		

Physical Characteristics

Cross Section (A)	Path Length (ℓ)	Window Area (Wa)	Volume (V)	Breakdown Voltage (Vac)
1.990 cm ²	10.74 cm	4.27 cm ²	21.3726 cm ³	1,000
0.308 in ²	4.23 in	842,708 cmil	1.3042 in ³	

Winding Information

0% Winding length/turn (cm)		
6.214		
40% winding factor Surface Area (cm ²)		
96.50		
40% Wound Di.(mm)		
OD	ID	HT
53.30	15.26	25.79

Typical DC Bias Performance

