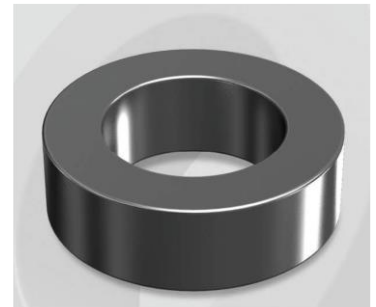


CS508090G

OD : 508

Electrical Characteristics

Material	Permeability (μ)	AL \pm 8% (nH/N ²)	DCB (% min) @ 30 Oe	Coreloss (mW/cm ³ , max) @ 50kHz, 500G
SENDUST	90	109	64.4	73



Core Dimensions

Dimensions		Uncoated		Coated		Color	Packaging
		(mm)	(inch)	(mm)	(inch)		
OD	(Max)	50.80	2.000	51.70	2.035	Black	Box Qty = 96 pcs
ID	(Min)	31.75	1.250	30.90	1.217		
HT	(Max)	13.46	0.530	14.35	0.565		

Physical Characteristics

Cross Section (A)	Path Length (l)	Window Area (W _a)	Volume (V)	Breakdown Voltage (Vac)
1.250 cm ²	12.73 cm	7.50 cm ²	15.913 cm ³	1,000
0.194 in ²	5.01 in	1,480,166 cmil	0.971 in ³	

Winding Information

0% Winding length/turn (cm)		
4.950		
40% winding factor Surface Area (cm ²)		
108.52		
40% Wound Di.(mm)		
OD	ID	HT
59.57	20.23	23.62

Typical DC Bias Performance

