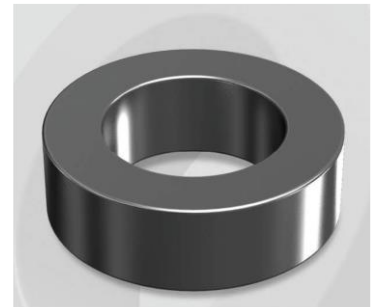


CS571026G

Electrical Characteristics

Material	Permeability (μ)	AL \pm 8% (nH/N ²)	DCB (% min) @ 200 Oe	Coreloss (mW/cm ³ , max) @ 50kHz, 300G
SENDUST	26	60	46.0	27

OD : 571



Core Dimensions

Dimensions		Uncoated		Coated		Color	Packaging
		(mm)	(inch)	(mm)	(inch)		
OD	(Max)	57.15	2.25	58.00	2.28	Black	Box Qty = 77 pcs
ID	(min)	26.39	1.04	25.60	1.01		
HT	(max)	15.24	0.60	16.10	0.63		

Physical Characteristics

Cross Section (A)	Path Length (l)	Window Area (Wa)	Volume (V)	Breakdown Voltage (Vac)
2.29 cm ²	12.50 cm ²	5.14 cm ²	28.63 cm ³	1,000
0.355 in ²	4.921 in	1,014,407 cmil	1.7467 in ³	

Winding Information

0% Winding length/turn (cm)		
6.46		
40% winding factor Surface Area (cm ²)		
120.40		
40% Wound Di.(mm)		
OD	ID	HT
64.20	16.75	23.62

Typical DC Bias Performance

