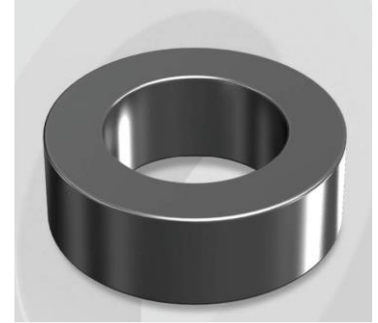


# CS571026G20.3

## Electrical Characteristics

Material	Permeability ( $\mu$ )	AL $\pm$ 8% (nH/N <sup>2</sup> )	DCB (% min) @ 200 Oe	Coreloss (mW/cm <sup>3</sup> , max) @ 50kHz, 300G
SENDUST	26	80	46.0	27

OD : 571



## Core Dimensions

Dimensions		Uncoated		Coated		Color	Packaging
		(mm)	(inch)	(mm)	(inch)		
OD	(Max)	57.15	2.25	58.00	2.28	Black	Box Qty = 66 pcs
ID	(min)	26.39	1.04	25.60	1.01		
HT	(max)	20.30	0.80	21.30	0.84		

## Physical Characteristics

Cross Section (A)	Path Length ( $l$ )	Window Area (W <sub>a</sub> )	Volume (V)	Breakdown Voltage (Vac)
3.050 cm <sup>2</sup>	12.50 cm	5.14 cm <sup>2</sup>	38.125 cm <sup>3</sup>	1,000
0.473 in <sup>2</sup>	4.921 in	1,014,407 cmil	2.3264 in <sup>3</sup>	

## Winding Information

0% Winding length/turn (cm)		
7.5		
40% winding factor Surface Area (cm <sup>2</sup> )		
133.63		
40% Wound Di.(mm)		
OD	ID	HT
64.20	16.75	28.82

## Typical DC Bias Performance

