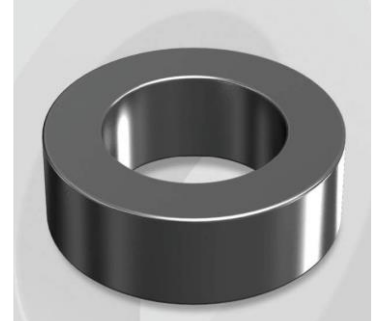


CS571060G

Electrical Characteristics

Material	Permeability (μ)	AL \pm 8% (nH/N ²)	DCB (% min) @ 50 Oe	Coreloss (mW/cm ² , max) @50kHz, 500G
SENDUST	60	138	64.4	73

OD : 571



Core Dimensions

Dimensions		Uncoated		Coated		Color	Packaging
		(mm)	(inch)	(mm)	(inch)		
OD	(Max)	57.15	2.250	58.00	2.283	Black	Box Qty = 77 pcs
ID	(min)	26.39	1.039	25.60	1.008		
HT	(max)	15.24	0.600	16.10	0.634		

Physical Characteristics

Cross Section (A)	Path Length (ℓ)	Window Area (Wa)	Volume (V)	Breakdown Voltage (Vac)
2.290 cm ²	12.50 cm	5.14 cm ²	28.630 cm ³	1,000
0.355 in ²	4.921 in	1,014,407 cmil	1.7470 in ³	

Winding Information

0% Winding length/turn (cm)		
6.46		
40% winding factor Surface Area (cm ²)		
120.4		
40% Wound Di.(mm)		
OD	ID	HT
64.20	16.75	23.62

Typical DC Bias Performance

