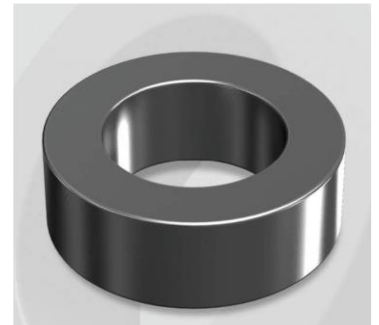


# CS610026G

## Electrical Characteristics

Material	Permeability (μ)	AL ± 8% (nH/N <sup>2</sup> )	DCB (% min) @ 200 Oe	Coreloss (mW/cm <sup>2</sup> , max) @50kHz, 100G
SENDUST	26	83	46.0	2.4

OD : 610



## Core Dimensions

Dimensions		Uncoated		Coated		Color	Packaging
		(mm)	(inch)	(mm)	(inch)		
OD	(Max)	62.00	2.441	63.10	2.484	Black	Box Qty = 24 pcs
ID	(min)	32.60	1.283	31.37	1.235		
HT	(max)	25.00	0.984	26.27	1.034		

## Physical Characteristics

Cross Section (A)	Path Length (ℓ)	Window Area (Wa)	Volume (V)	Breakdown Voltage (Vac)
3.68 cm <sup>2</sup>	14.37 cm	7.73 cm <sup>2</sup>	52.810 cm <sup>3</sup>	1,000
0.570 in <sup>2</sup>	5.66 in	1,525,610 cmil	3.222 in <sup>3</sup>	

## Winding Information

AWG Wire No. Dia. (cm)	Single Layer Turn Rdc. (Ω)	AWG Wire No. Dia. (cm)	Single Layer Turn Rdc. (Ω)	Winding length/turn (cm)		
10 0.267	N-A	19 0.0980	N-A	8.427		
11 0.238		20 0.0879		40% winding factor Surface Area (cm <sup>2</sup> )		
12 0.213		21 0.0785		173.99		
13 0.190		22 0.0701		40% Wound Di.(mm)		
14 0.171		23 0.0632		OD	ID	HT
15 0.153		24 0.0566		70.78	20.54	35.53
16 0.137		25 0.0505				
17 0.122		26 0.0452				
18 0.109		27 0.0409				

## Typical DC Bias Performance

