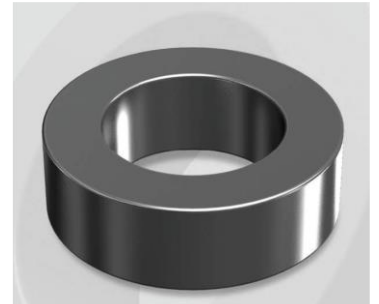


CS777060G30

Electrical Characteristics

Material	Permeability (μ)	AL \pm 8% (nH/N ²)	DCB (% min) @ 50 Oe	Coreloss (mW/cm ² , Max) @ 50kHz, 300G
SENDUST	60	160	64.4	27

OD : 777



Core Dimensions

Dimensions		Uncoated		Coated		Color	Packaging
		(mm)	(inch)	(mm)	(inch)		
OD	(Max)	77.80	3.063	78.90	3.106	Black	Box Qty = 20 pcs
ID	(Min)	49.23	1.938	48.00	1.890		
HT	(Max)	30.00	1.181	31.10	1.224		

Physical Characteristics

Cross Section (A)	Path Length (l)	Window Area (Wa)	Volume (V)	Breakdown Voltage (Vac)
4.181 cm ²	20.00 cm	17.99 cm ²	83.62 cm ³	1,000
0.648 in ²	7.87 in	3,550,424 cmil	5.1026 in ³	

Winding Information

0% Winding length/turn (cm)		
9.310		
40% winding factor Surface Area (cm ²)		
290.33		
40% Wound Di.(mm)		
OD	ID	HT
91.14	31.33	45.55

Typical DC Bias Performance

