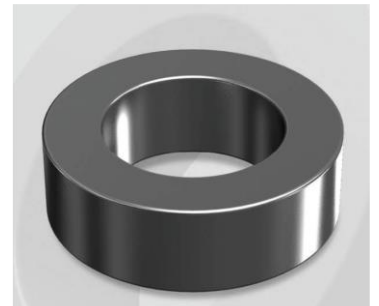


CK127090G

OD : 127

Electrical Characteristics

Material	Permeability (μ)	AL \pm 8% (nH/N ²)	DCB (% min) @ 60 Oe	Coreloss (mW/cm ³ , max) @50kHz, 1000G
Mega Flux	90	40	55.2	710



Core Dimensions

Dimensions		Uncoated		Coated		Color	Packaging
		(mm)	(inch)	(mm)	(inch)		
OD	(Max)	12.70	0.500	13.46	0.530	Black	Box Qty = 4,000 pcs
ID	(min)	7.62	0.300	6.99	0.275		
HT	(max)	4.75	0.187	5.51	0.217		

Physical Characteristics

Cross Section (A)	Path Length (l)	Window Area (W _a)	Volume (V)	Breakdown Voltage (Vac)
0.114 cm ²	3.12 cm	0.383 cm ²	0.3557 cm ³	1,000
0.018 in ²	1.23 in	75,587 cmil	0.0217 in ³	

Winding Information

0% Winding length/turn (cm)		
1.749		
40% winding factor Surface Area (cm ²)		
8.00		
40% Wound Di.(mm)		
OD	ID	HT
15.18	4.57	7.58

Typical DC Bias Performance

