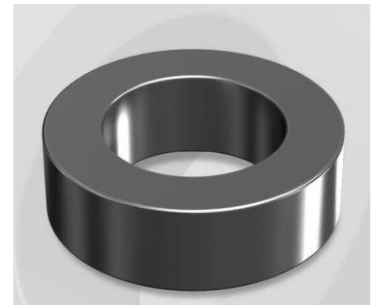


CK166060G

OD : 166

Electrical Characteristics

Material	Permeability (μ)	AL \pm 8% (nH/N ²)	DCB (% min) @ 100 Oe	Coreloss (mW/cm ³ , max) @50kHz, 1000G
Mega Flux	60	35	59.8	710



Core Dimensions

Dimensions		Uncoated		Coated		Color	Packaging
		(mm)	(inch)	(mm)	(inch)		
OD	(Max)	16.51	0.650	17.40	0.685	Black	Box Qty = 1,960 pcs
ID	(min)	10.16	0.400	9.53	0.375		
HT	(max)	6.35	0.250	7.11	0.280		

Physical Characteristics

Cross Section (A)	Path Length (l)	Window Area (W _a)	Volume (V)	Breakdown Voltage (Vac)
0.1920 cm ²	4.11 cm	0.713 cm ²	0.7891 cm ³	1,000
0.02976 in ²	1.618 in	140,714 cmil	0.0482 in ³	

Winding Information

0% Winding length/turn (cm)		
2.209		
40% winding factor Surface Area (cm ²)		
13.66		
40% Wound Di.(mm)		
OD	ID	HT
19.77	6.24	9.94

Typical DC Bias Performance

