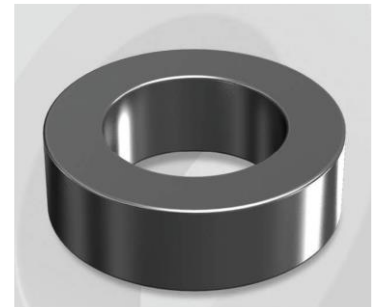


CK229026G

OD : 229

Electrical Characteristics

Material	Permeability (μ)	AL \pm 8% (nH/N ²)	DCB (% min) @ 200 Oe	Coreloss (mW/cm ³ , max) @50kHz, 1000G
Mega Flux	26	19	64.4	770



Core Dimensions

Dimensions		Uncoated		Coated		Color	Packaging
		(mm)	(inch)	(mm)	(inch)		
OD	(Max)	22.86	0.900	23.62	0.930	Black	Box Qty = 850 pcs
ID	(min)	13.97	0.550	13.39	0.527		
HT	(max)	7.62	0.300	8.38	0.330		

Physical Characteristics

Cross Section (A)	Path Length (l)	Window Area (W _a)	Volume (V)	Breakdown Voltage (Vac)
0.3310 cm ²	5.67 cm	1.410 cm ²	1.8768 cm ³	1,000
0.05131 in ²	2.232 in	278,271 cmil	0.1145 in ³	

Winding Information

0% Winding length/turn (cm)		
2.699		
40% winding factor Surface Area (cm ²)		
24.13		
40% Wound Di.(mm)		
OD	ID	HT
26.99	8.77	12.37

Typical DC Bias Performance

