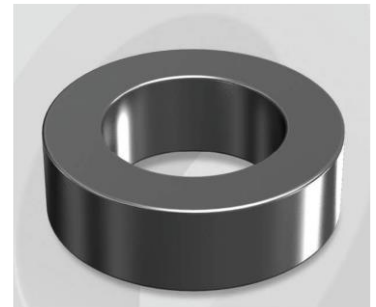


# CK400075G

OD : 400

## Electrical Characteristics

Material	Permeability ( $\mu$ )	AL $\pm$ 8% (nH/N <sup>2</sup> )	DCB (% min) @ 80 Oe	Coreloss (mW/cm <sup>2</sup> , max) @50kHz, 500G
Mega Flux	75	101	53.4	160



## Core Dimensions

Dimensions		Uncoated		Coated		Color	Packaging
		(mm)	(inch)	(mm)	(inch)		
OD	(Max)	39.88	1.570	40.70	1.602	Black	Box Qty = 120 pcs
ID	(min)	24.13	0.950	23.30	0.917		
HT	(max)	14.48	0.570	15.37	0.605		

## Physical Characteristics

Cross Section (A)	Path Length ( $l$ )	Window Area (W <sub>a</sub> )	Volume (V)	Breakdown Voltage (Vac)
1.072 cm <sup>2</sup>	9.84 cm	4.27 cm <sup>2</sup>	10.5485 cm <sup>3</sup>	1,000
0.1662 in <sup>2</sup>	3.87 in	842,708 cmil	0.644 in <sup>3</sup>	

## Winding Information

0% Winding length/turn (cm)		
4.814		
40% winding factor Surface Area (cm <sup>2</sup> )		
73.77		
40% Wound Di.(mm)		
OD	ID	HT
46.57	15.26	22.32

## Typical DC Bias Performance

