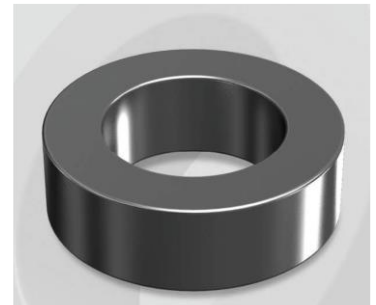


CK468090G

OD : 468

Electrical Characteristics

Material	Permeability (μ)	AL \pm 8% (nH/N ²)	DCB (% min) @ 60 Oe	Coreloss (mW/cm ³ , max) @ 50kHz, 500G
Mega Flux	90	128	55.2	160



Core Dimensions

Dimensions		Uncoated		Coated		Color	Packaging
		(mm)	(inch)	(mm)	(inch)		
OD	(Max)	46.74	1.840	47.60	1.874	Black	Box Qty = 72 pcs
ID	(min)	28.70	1.130	27.90	1.098		
HT	(max)	15.24	0.600	16.13	0.635		

Physical Characteristics

Cross Section (A)	Path Length (l)	Window Area (W _a)	Volume (V)	Breakdown Voltage (Vac)
1.340 cm ²	11.63 cm	6.11 cm ²	15.584 cm ³	1,000
0.208 in ²	4.58 in	1,205,842 cmil	0.951 in ³	

Winding Information

0% Winding length/turn (cm)		
5.196		
40% winding factor Surface Area (cm ²)		
97.79		
40% Wound Di.(mm)		
OD	ID	HT
54.66	18.26	24.48

Typical DC Bias Performance

