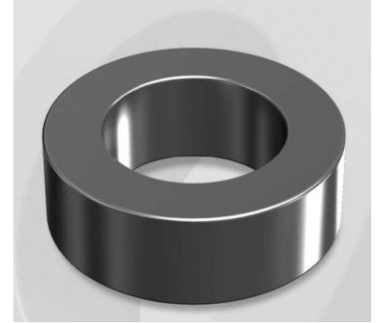


CK508026G

Electrical Characteristics

Material	Permeability (μ)	AL \pm 8% (nH/N ²)	DCB (% min) @ 200 Oe	Coreloss (mW/cm ² , max) @50kHz, 300G
Mega Flux	26	32	64.4	73

OD : 508



Core Dimensions

Dimensions		Uncoated		Coated		Color	Packaging
		(mm)	(inch)	(mm)	(inch)		
OD	(Max)	50.80	2.000	51.70	2.035	Black	Box Qty = 96 pcs
ID	(min)	31.75	1.250	30.90	1.217		
HT	(max)	13.46	0.530	14.35	0.565		

Physical Characteristics

Cross Section (A)	Path Length (ℓ)	Window Area (Wa)	Volume (V)	Breakdown Voltage (Vac)
1.250 cm ²	12.73 cm	7.50 cm ²	15.910 cm ³	1,000
0.194 in ²	5.012 in	1,480,166 cmil	0.9708 in ³	

Winding Information

0% Winding length/turn (cm)		
4.95		
40% winding factor Surface Area (cm ²)		
108.52		
40% Wound Di.(mm)		
OD	ID	HT
59.57	20.23	23.62

Typical DC Bias Performance

