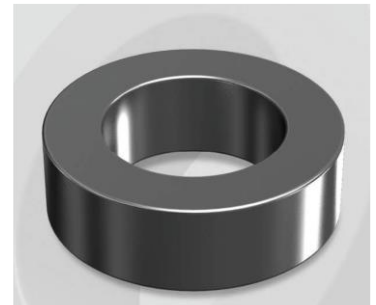


# CK508060G

OD : 508

## Electrical Characteristics

Material	Permeability ( $\mu$ )	AL $\pm$ 8% (nH/N <sup>2</sup> )	DCB (% min) @ 100 Oe	Coreloss (mW/cm <sup>2</sup> , max) @ 50kHz, 500G
Mega Flux	60	73	59.8	160



## Core Dimensions

Dimensions		Uncoated		Coated		Color	Packaging
		(mm)	(inch)	(mm)	(inch)		
OD	(Max)	50.80	2.000	51.70	2.035	Black	Box Qty = 96 pcs
ID	(min)	31.75	1.250	30.90	1.217		
HT	(max)	13.46	0.530	14.35	0.565		

## Physical Characteristics

Cross Section (A)	Path Length ( $l$ )	Window Area (Wa)	Volume (V)	Breakdown Voltage (Vac)
1.250 cm <sup>2</sup>	12.73 cm	7.50 cm <sup>2</sup>	15.913 cm <sup>3</sup>	1,000
0.194 in <sup>2</sup>	5.01 in	1,480,166 cmil	0.971 in <sup>3</sup>	

## Winding Information

0% Winding length/turn (cm)		
4.950		
40% winding factor Surface Area (cm <sup>2</sup> )		
108.52		
40% Wound Di.(mm)		
OD	ID	HT
59.57	20.23	23.62

## Typical DC Bias Performance

