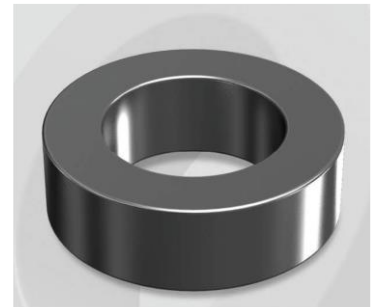


CK571019G

OD : 571

Electrical Characteristics

Material	Permeability (μ)	AL \pm 8% (nH/N ²)	DCB (% min) @ 200 Oe	Coreloss (mW/cm ³ , max) @ 50kHz, 300G
Mega Flux	19	44	77.3	60



Core Dimensions

Dimensions		Uncoated		Coated		Color	Packaging
		(mm)	(inch)	(mm)	(inch)		
OD	(Max)	57.15	2.250	58.00	2.283	Black	Box Qty = 77 pcs
ID	(min)	26.39	1.039	25.60	1.008		
HT	(max)	15.24	0.600	16.10	0.634		

Physical Characteristics

Cross Section (A)	Path Length (l)	Window Area (W _a)	Volume (V)	Breakdown Voltage (Vac)
2.290 cm ²	12.50 cm	5.14 cm ²	28.625 cm ³	1,000
0.355 in ²	4.92 in	1,014,407 cmil	1.747 in ³	

Winding Information

0% Winding length/turn (cm)		
6.460		
40% winding factor Surface Area (cm ²)		
120.40		
40% Wound Di.(mm)		
OD	ID	HT
64.20	16.75	23.62

Typical DC Bias Performance

