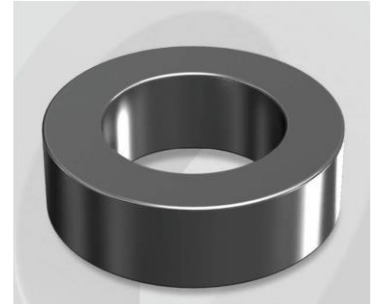


CK740090G

Electrical Characteristics

Material	Permeability (μ)	AL \pm 8% (nH/N ²)	DCB (% min) @ 60 Oe	Coreloss (mW/cm ³ , max) @ 50kHz, 300G
Mega Flux	90	309	55.2	55

OD : 740



Core Dimensions

Dimensions		Uncoated		Coated		Color	Packaging
		(mm)	(inch)	(mm)	(inch)		
OD	(Max)	74.10	2.917	75.20	2.961	Black	Box Qty = 15 pcs
ID	(min)	45.30	1.783	44.07	1.735		
HT	(max)	35.00	1.378	36.27	1.428		

Physical Characteristics

Cross Section (A)	Path Length (l)	Window Area (Wa)	Volume (V)	Breakdown Voltage (Vac)
5.040 cm ²	18.38 cm	15.25 cm ²	92.635 cm ³	1,000
0.781 in ²	7.24 in	3,009,670 cmil	5.653 in ³	

Winding Information

0% Winding length/turn (cm)		
10.367		
40% winding factor Surface Area (cm ²)		
283.09		
40% Wound Di.(mm)		
OD	ID	HT
86.36	28.85	49.46

Typical DC Bias Performance

