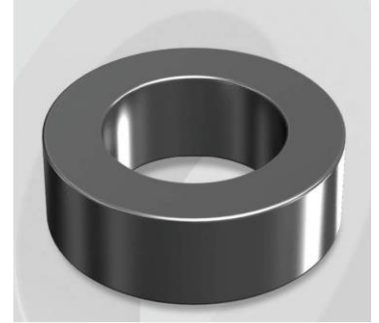


CK778060G

Electrical Characteristics

Material	Permeability (μ)	AL \pm 8% (nH/N ²)	DCB (% min) @ 100 Oe	Coreloss (mW/cm ² , max) @ 50kHz, 300G
Mega Flux	60	85	59.8	57

OD : 778



Core Dimensions

Dimensions		Uncoated		Coated		Color	Packaging
		(mm)	(inch)	(mm)	(inch)		
OD	(Max)	77.80	3.063	78.90	3.106	Black	Box Qty = 35 pcs
ID	(min)	49.23	1.938	48.00	1.890		
HT	(max)	15.90	0.626	17.20	0.677		

Physical Characteristics

Cross Section (A)	Path Length (ℓ)	Window Area (Wa)	Volume (V)	Breakdown Voltage (Vac)
2.270 cm ²	20.00 cm	17.99 cm ²	45.400 cm ³	1,000
0.352 in ²	7.874 in	3,550,424 cmil	2.7703 in ³	

Winding Information

0% Winding length/turn (cm)		
6.53		
40% winding factor Surface Area (cm ²)		
236.84		
40% Wound Di.(mm)		
OD	ID	HT
91.14	31.33	31.65

Typical DC Bias Performance

