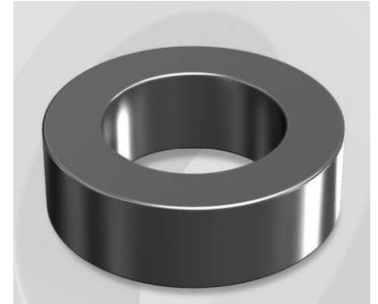


HS096090G

Electrical Characteristics

Material	Permeability (μ)	AL \pm 8% (nH/N ²)	DCB (% min) @ 60 Oe	Coreloss (mW/cm ³ , max) @ 50kHz, 1000G
HS	90	38	61.6	300

OD : 096



Core Dimensions

Dimensions		Uncoated		Coated		Color	Packaging
		(mm)	(inch)	(mm)	(inch)		
OD	(Max)	9.65	0.380	10.29	0.405	Black	Box Qty = 8,000 pcs
ID	(min)	4.78	0.188	4.27	0.168		
HT	(max)	3.18	0.125	3.81	0.150		

Physical Characteristics

Cross Section (A)	Path Length (l)	Window Area (Wa)	Volume (V)	Breakdown Voltage (Vac)
0.075 cm ²	2.18 cm	0.14 cm ²	0.164 cm ³	1,000
0.012 in ²	0.86 in	28,202 cmil	0.010 in ³	

Winding Information

0% Winding length/turn (cm)		
1.364		
40% winding factor Surface Area (cm ²)		
4.14		
40% Wound Di.(mm)		
OD	ID	HT
11.32	2.79	5.07

Typical DC Bias Performance

