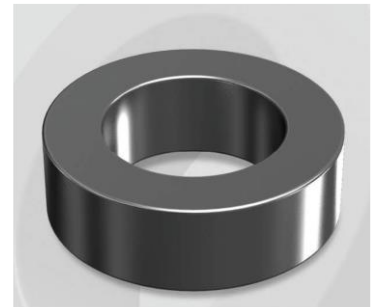


HP1033019G

OD : 1033

Electrical Characteristics

Material	Permeability (μ)	AL \pm 8% (nH/N ²)	DCB (% min) @ 200 Oe	Coreloss (mW/cm ² , max) @50kHz, 100G
HP	19	70	65.3	3



Core Dimensions

Dimensions		Uncoated		Coated		Color	Packaging
		(mm)	(inch)	(mm)	(inch)		
OD	(Max)	101.60	4.000	103.10	4.059	Black	Box Qty = 6 pcs
ID	(min)	57.20	2.252	55.70	2.193		
HT	(max)	33.00	1.299	34.30	1.350		

Physical Characteristics

Cross Section (A)	Path Length (l)	Window Area (W _a)	Volume (V)	Breakdown Voltage (Vac)
7.044 cm ²	24.27 cm	24.37 cm ²	170.958 cm ³	1,000
1.092 in ²	9.56 in	4,808,939 cmil	10.4318 in ³	

Winding Information

0% Winding length/turn (cm)		
11.600		
40% winding factor Surface Area (cm ²)		
438.88		
40% Wound Di.(mm)		
OD	ID	HT
116.93	36.46	50.84

Typical DC Bias Performance

