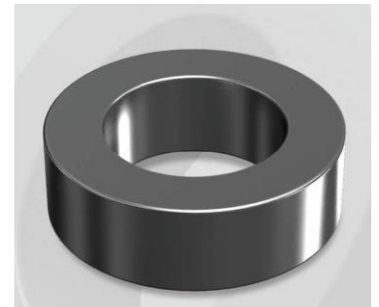


# HP1320019G

OD : 1320

## Electrical Characteristics

Material	Permeability ( $\mu$ )	AL $\pm$ 8% (nH/N <sup>2</sup> )	DCB (% min) @ 200 Oe	Coreloss (mW/cm <sup>3</sup> , max) @ 50kHz, 100G
HP	19	39	65.3	3



## Core Dimensions

Dimensions		Uncoated		Coated		Color	Packaging
		(mm)	(inch)	(mm)	(inch)		
OD	(Max)	132.50	5.217	134.20	5.283	Black	Box Qty = 5 pcs
ID	(min)	78.60	3.094	77.00	3.031		
HT	(max)	20.30	0.799	21.70	0.854		

## Physical Characteristics

Cross Section (A)	Path Length ( $l$ )	Window Area (W <sub>a</sub> )	Volume (V)	Breakdown Voltage (Vac)
5.347 cm <sup>2</sup>	32.42 cm	46.57 cm <sup>2</sup>	173.350 cm <sup>3</sup>	1,000
0.829 in <sup>2</sup>	12.76 in	9,190,102 cmil	10.5778 in <sup>3</sup>	

## Winding Information

0% Winding length/turn (cm)		
10.060		
40% winding factor Surface Area (cm <sup>2</sup> )		
617.08		
40% Wound Di.(mm)		
OD	ID	HT
153.59	50.41	44.69

## Typical DC Bias Performance

