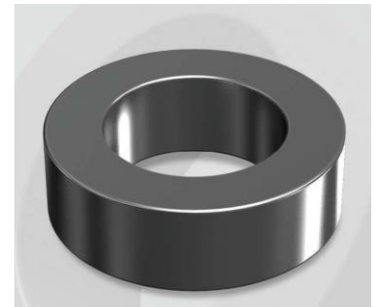


HP571026G

OD : 571

Electrical Characteristics

Material	Permeability (μ)	AL \pm 8% (nH/N ²)	DCB (% min) @ 200 Oe	Coreloss (mW/cm ² , max) @ 50kHz, 300G
HP	26	60	58.0	22



Core Dimensions

Dimensions		Uncoated		Coated		Color	Packaging
		(mm)	(inch)	(mm)	(inch)		
OD	(Max)	57.15	2.250	58.00	2.283	Black	Box Qty = 77 pcs
ID	(min)	26.39	1.039	25.60	1.008		
HT	(max)	15.24	0.600	16.10	0.634		

Physical Characteristics

Cross Section (A)	Path Length (l)	Window Area (Wa)	Volume (V)	Breakdown Voltage (Vac)
2.29 cm ²	12.5 cm	5.14 cm ²	28.6 cm ³	1,000
0.355 in ²	4.92 in	1,014,407 cmil	1.75 in ³	

Winding Information

0% Winding length/turn (cm)		
6.460		
40% winding factor Surface Area (cm ²)		
120.40		
40% Wound Di.(mm)		
OD	ID	HT
64.20	16.75	23.62

Typical DC Bias Performance

